

# Request for Proposal

## 2026 Trail & Concrete Improvements

**Project Owner:** Rock Rapids Development Corporation

**Issue Date:** May 12, 2026

**Submission Deadline:** Wednesday, May 27, 2026, by 12:00 PM (Noon)

The Rock Rapids Development Corporation is soliciting competitive bids for trail paving projects within the city of Rock Rapids, IA. This project aims to enhance pedestrian access and recreational infrastructure for the community.

The project is divided into six primary segments. Bidders are expected to provide a comprehensive quote covering labor, materials, concrete, and equipment for the following:

- **Softball Field Sidewalk:** Concrete widening west of the press box.
- **Baseball Field Concessions Stand:** Concrete widening south of concessions.
- **Ballfields to Third Avenue:** Trail paving
- **Third Avenue to Park Drive:** Trail paving
- **Park Drive to Westside Park Entrance:** Trail paving
- **Buncombe Drive to Union Street:** Trail paving
- **Alternative Bid Project:** Softball Field Playground Trail

Timely completion is critical to minimize disruption to community activities.

- Work on the Softball Field Press Box, Baseball Concession Stand, and Alternative Bid Project Softball Field Playground Trail areas cannot begin before July 6, 2026, due to the active summer sports season.
- All paving and concrete work across all segments must be 100% complete no later than September 1, 2026.
- Concrete must be provided by Tri-State Ready Mix.

Interested contractors must submit their bids containing a detailed cost breakdown and estimated timeline for each segment.

**Submit To:** Micah Freese

**Deadline:** Wednesday, May 27, 2026 | 12:00 PM (Noon)

**Delivery Address:**

411 First Avenue

PO Box 403

Rock Rapids, IA 51246

Enclosed you will find a map and spec sheet of the project. Please contact the Rock Rapids Development Corporation office for any questions at 712-472-4585.

The Rock Rapids Development Corporation reserves the right to reject any or all bids, to waive any informality or technicality in any bid, and to accept any bid deemed to be in the best interest of the Corporation and the City of Rock Rapids.

**2026 Rock Rapids Trail Paving Project**

**Softball Field Sidewalk Widening west of pressbox**

1) Common Excavation/site prep/gravel	\$
2) 6" 4000 PSI Concrete approximately 545 SF, 6' wide	\$
3) Rebar 24" on center	
TOTAL	\$

**Baseball Field Concession Stand Widening**

1) Remove existing 6' gravel	\$
2) 6" 4000 PSI Concrete approximately 620 SF, 6' wide	\$
3) Rebar 24" on center	\$
TOTAL	\$

**Ball Fields to Third Avenue**

1) *Common Excavation/site prep/gravel*	\$
2) *Remove existing concrete 2900 SF*	\$
3) Curb Cut 60 LF	\$
4) 6" 4000 PSI Concrete approximately 9650 SF, 10' wide	\$
5) Rebar 24" on center	
6) Truncated dome ADA mats	\$
TOTAL	\$

\*site may be prepped and concrete removed

**Third Avenue to Park Drive**

1) Common Excavation/site prep/gravel	\$
2) Remove existing concrete approximately 1200 SF	\$
3) Curb Cut 32 LF	\$
4) 6" 4000 PSI Concrete approximately 1615 SF, 8' wide	\$
5) Replace east side of concrete driveway approx 160 SF	\$
6) Rebar 24" on center	
7) Truncated dome ADA mats	\$
TOTAL	\$

**Park Drive to Westside Park Entrance**

1) Common Excavation/site prep/gravel	\$
2) Remove existing concrete approximately 72 SF	\$
3) Curb Cut 16 LF	\$
4) 6" 4000 PSI Concrete approximately 1780 SF, 10' wide	\$
5) Rebar 24" on center	
6) Truncated dome ADA mats	\$
TOTAL	\$

**Buncombe Drive to Union Street**

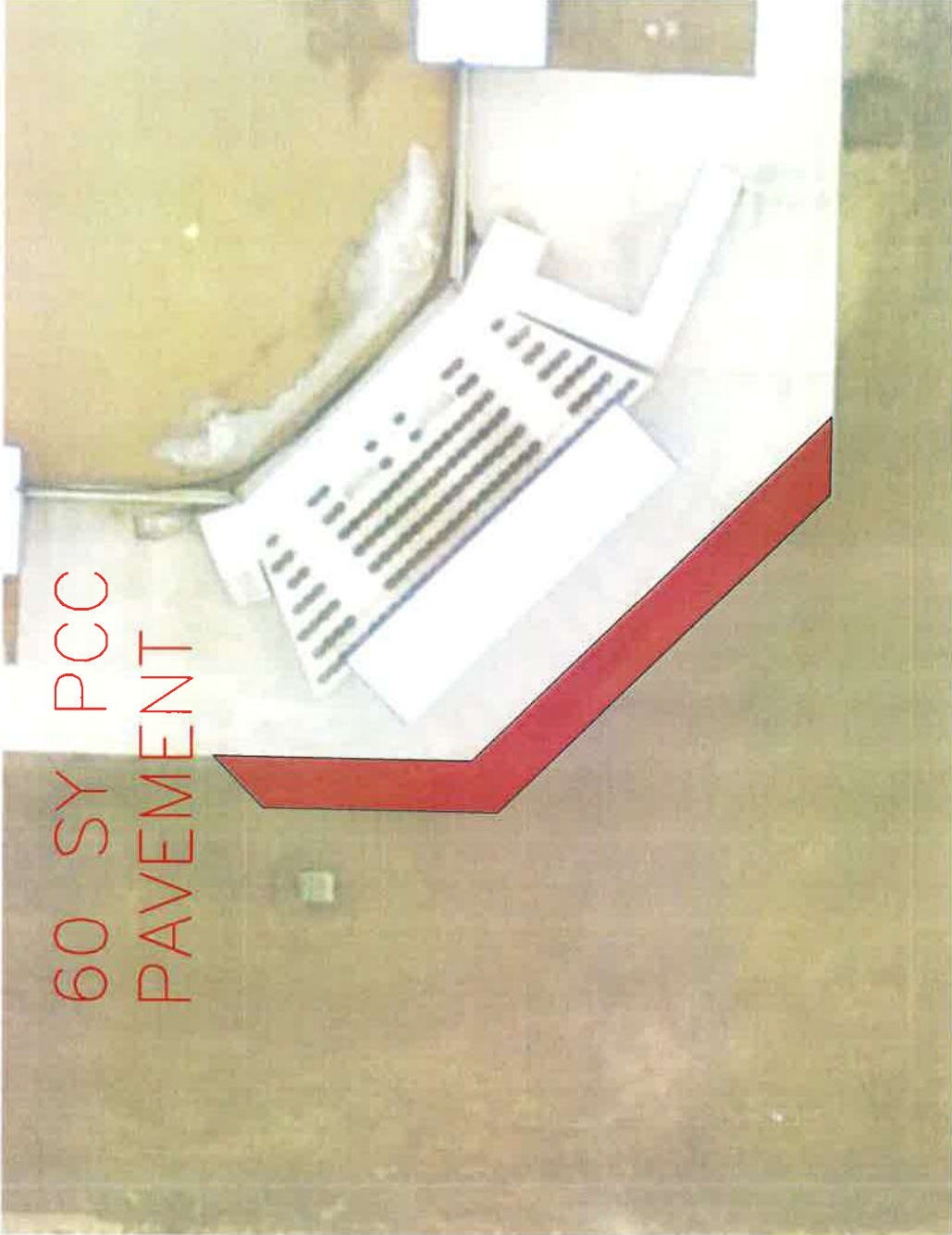
1) *Common Excavation/site prep/gravel*	\$
2) Curb Cut 30 LF	\$
3) 6" 4000 PSI Concrete approximately 7200 SF, 10' wide	\$
4) Rebar 24" on center	
5) Truncated dome ADA mats	\$
TOTAL	\$

\*site may be prepped\*

**Alternative Bid Project: Softball Field Playground Trail**

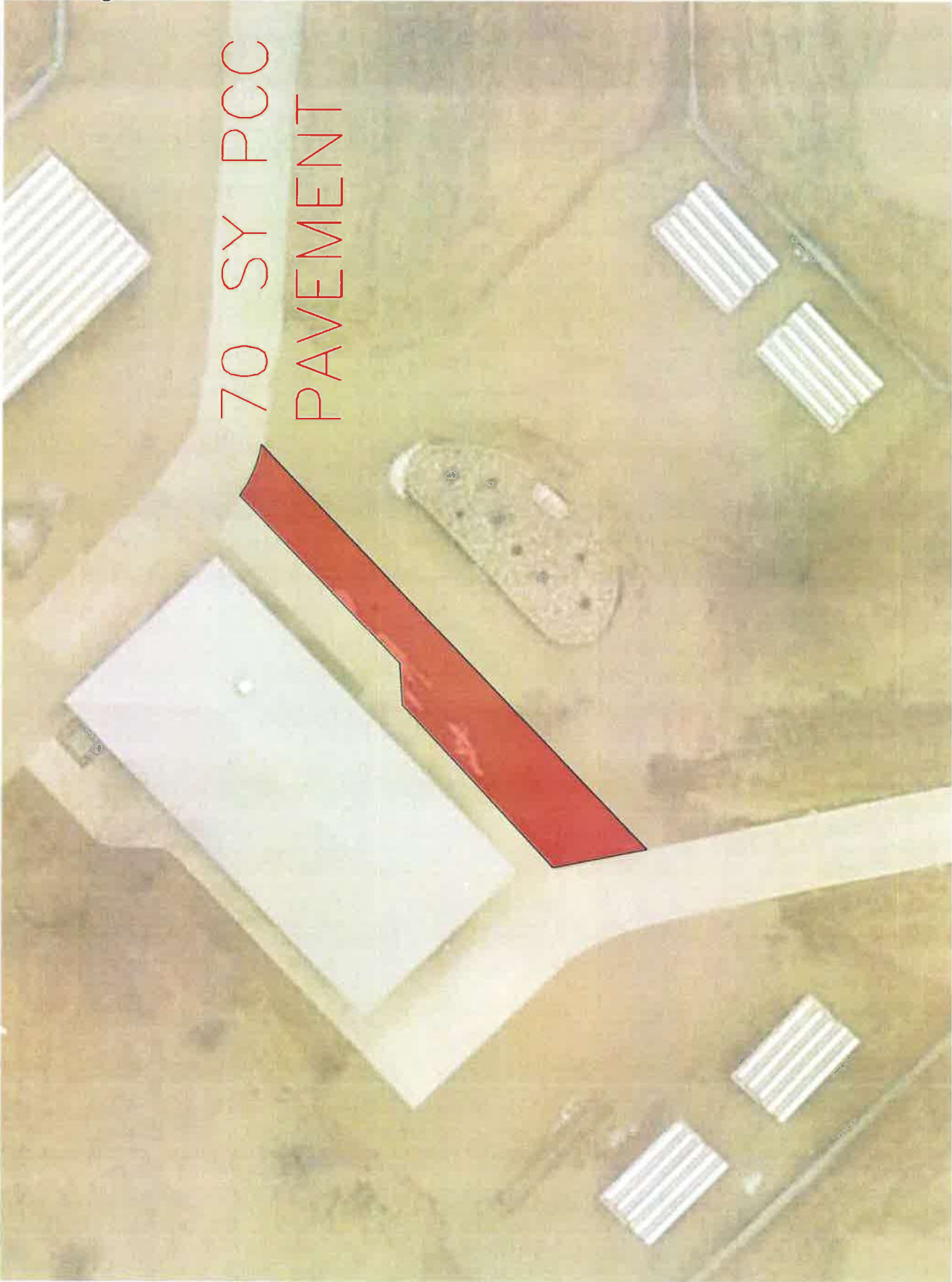
1) Common Excavation/site prep/gravel	\$
2) 6" 4000 PSI Concrete approximately 3,264 SF, 6' wide	\$
3) Rebar 24" on center	
TOTAL	\$

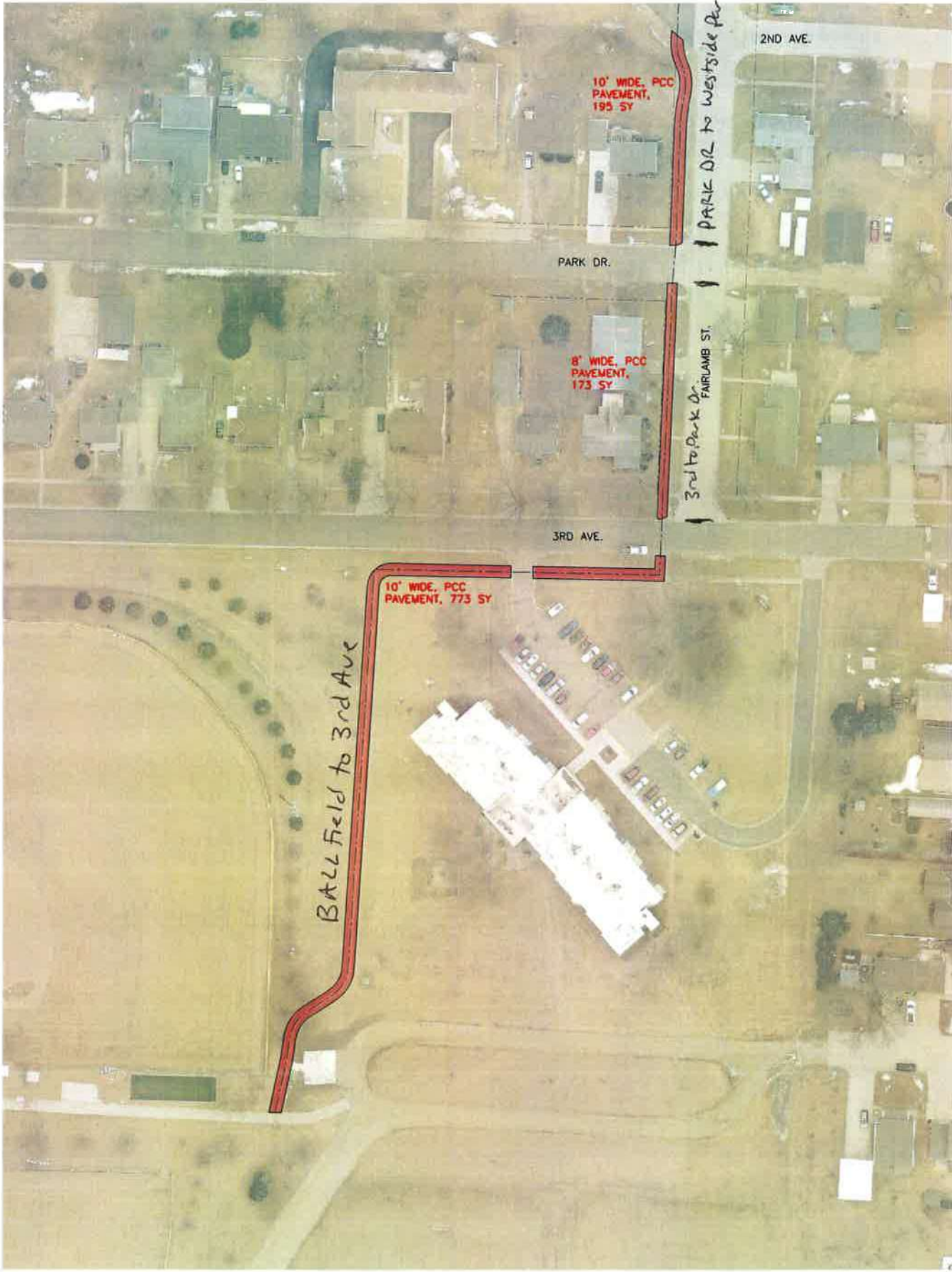
Softball field Sidewalk



60 SY PCC  
PAVEMENT

Baseball Field Concession Stand





10' WIDE, PCC  
PAVEMENT,  
195 SY

PARK DR.

PARK DR to Westside Park

2ND AVE.

8' WIDE, PCC  
PAVEMENT,  
173 SY

3rd to Park Dr  
FAIRLANE ST.

3RD AVE.

10' WIDE, PCC  
PAVEMENT, 773 SY

Ball Field to 3rd Ave

10' WIDE, PCC  
PAVEMENT,  
195 SY

Park Drive to westside Park

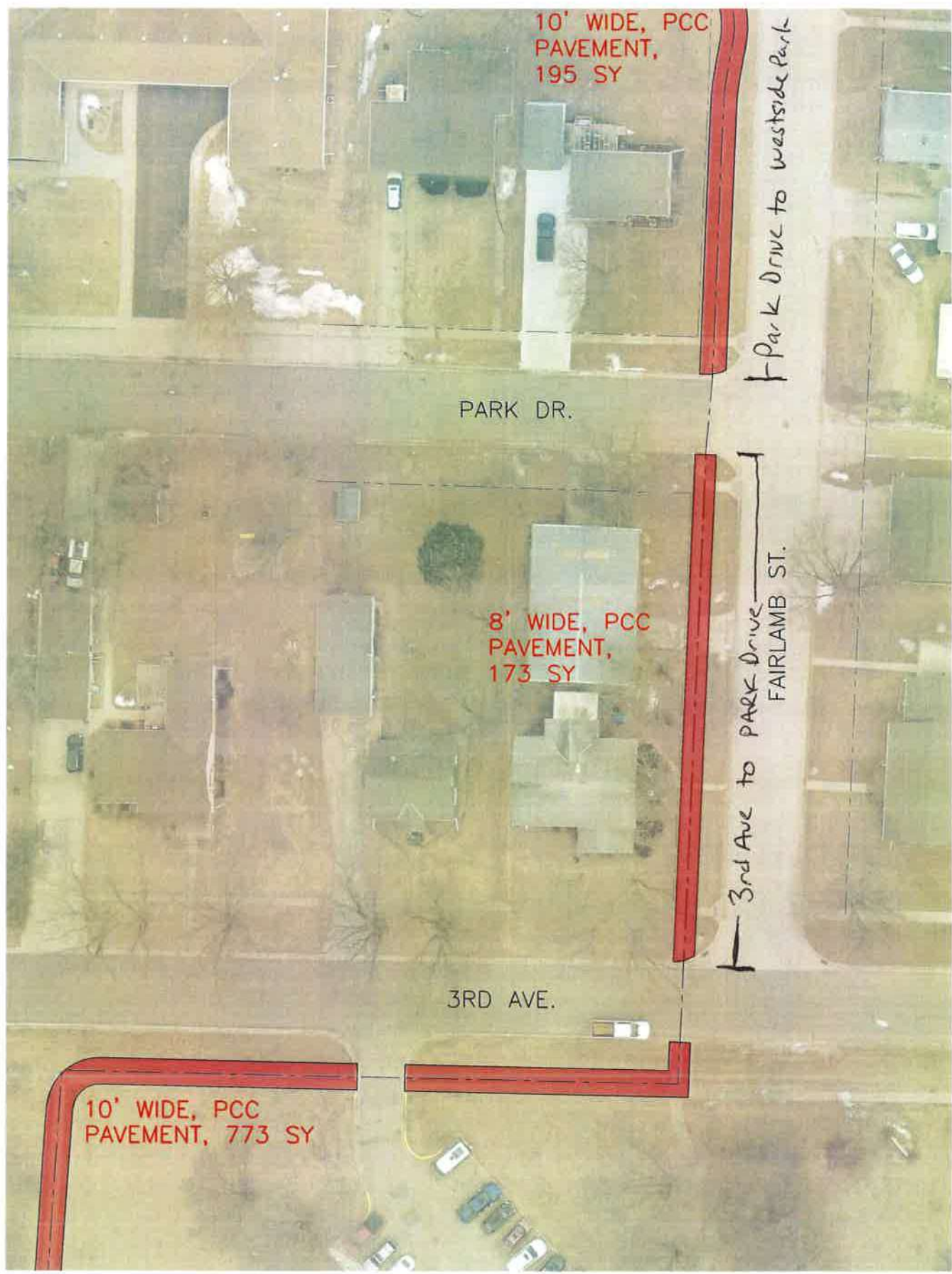
PARK DR.

8' WIDE, PCC  
PAVEMENT,  
173 SY

3rd Ave to Park Drive  
FAIRLAMB ST.

3RD AVE.

10' WIDE, PCC  
PAVEMENT, 773 SY



Buncombe Drive to Union St.

